



Time for a Meeting Monday, June 2, 2025 at 7:00 PM.

Museum of Arts and Sciences

Come early to chat with the early birds. This month is about getting to know each other and showing off some of our finds. Bring your favorite mineral and fossil to the meeting. Bring snacks to share and a drink since we will be going outside. For the Maker's challenge bring a display of some of your specimens. There are no limits to the size of the display, but it must be in a container. See examples below from Jay Batcha.



*Special Note: Member Gary Gordon passed December 7, 2024. Susan found out and will bring a copy of his obituary to the June meeting. Our condolences go out to the family.

Table of Contents

President's Message	page 01
Meeting Minutes	page 01
Pictures	page 03
Junior Rockhounds	page 05
Thinking Ahead	page 05
Let's Go Diggin'	page 06
Shows	page 06
Schedule	page 06
Articles by Edwin Williams	page 06
Club Information	page 09

Prez box June 2025

Hello fellow rock enthusiasts! We are coming off a successful April of events. A wonderful shark tooth hunt at the kaolin mines and an auction and picnic. The auction made a nice addition to our account. Thanks to all who participated in this great day.

Thanks to Tina, Shawn, and Tate for volunteering for our nominating committee. I know for sure they will be looking for a new president and vice president next year. In addition, they will be looking for responsible members to be able to sign club checks. This is a new revision to our bylaws and the formal process should be done shortly.

This last weekend we went shark tooth hunting at Fernandina beach in Florida. Together we found 3 itty bitty teeth, and I mean itty bitty. One fellow showed us his good finds that were about a half dozen small ones. It was a popular spot as the beach was busy with hunters. I still enjoy the hunt none the less. It is the thrill that we all know about. The hunt!

Tina has lined up 2 junior meetings this month. The first will be on the 17th of May and the other on the 31st of May for them to learn wire wrapping.

Our June meeting should be enjoyable and a little different from the usual format. It will be a night of fellowship as we share stories of our favorite rocks and fossils and share some extra specimens to trade or give away. We will go hunting for fossils Add in some drinks and snacks to make it a wonderful evening.

Looking forward to hearing some good rock stories at our next meeting. Along with some great displays too.

Prez. Bill Mayer

May Meeting Minutes

Mid Georgia Gem and Mineral Society
Club President Bill Mayer called the May 5, 2025 meeting to order at 7:08 P.M. with 25 in



attendance and welcomed visitors Kelly and Gwen from South Carolina.

Speaker of the Month: Jay introduced Bill Witherspoon, Geologist and co-author of Roadside Geology of Georgia speaking on Downstream of Fall Line. He had a slide show of 7 subtopics showing physical color-coded geologic maps of the Southeast saying the Fall line ran from New York to Texas. He talked about in Georgia the line ran from Columbus to Augusta with the older hard rock (315-550 MYA) containing gems above the line and the younger soft sedimentary rock (0-100 MYA) with fossils below the line. He showed many large cities and state capitols along the route saying in Georgia Rock and Kaolin Mining was abundant near and above the line and Agriculture was below in the fertile coastal plain section. He showed plate tectonic and continental shifts and their effects on the fall line, the uplifting and dropping down of being pulled apart resulted in Atlantic Sediment resting on Pangea rock. He elaborated on Triassic Age Red beds (200 MYA) 30 miles south of the line and explained how Kaolin was formed (50 to 75 MYA) in the Cretaceous – Eocene age from a hot climate and deep weathering dissolving Quartz, Granite, and Feldspar from the rocky Piedmont. He mentioned collecting Shell and Sand Dollar fossils from the Tivola Limestone Cemex Quarry in Clinchfield, Ga.



Picture by Jay Batcha

He finished with how the Ice Age (21000 YA) made the flood plains larger below the Fall Line and explained how the rising and falling of ocean levels cut thru the Limestone vs. the

Sediment. A question and answer followed, and he had some copies of his book for sale. Adoption of the minutes: The reading of the minutes from the previous meeting to be taken from the newsletter. A motion was made, and the members approved.

Treasurer Report: Susan Hargrove gave the bank account balances and said the club raised 961.00 dollars at the picnic auction.

Programs: Jay said Bill Witherspoon tonight and June's Meeting would be, bring your favorite Mineral and Fossil, snacks to share and a drink. There will be a fossil collecting trip to the Museum Caboose area in the gravel paths. He also said the Maker's Challenge would be Displays of anything Rock, Fossil, Lapidary, Mineral and Gems. All items must be labeled each with name and where it came from.

Field Trip: Jay mentioned a DMC Dig on June 7, 2025 in Conover, NC for Pegmatite. This was sent out by email last week.

Outreach: Tina Perkins said she would be showing fossils at Perdue Elementary School on Jurassic Park (the movie), at another school for Rock Club. and in July a STEM event at St. Joseph's School for Summer Camp was in the works.

Juniors: Tina mentioned meetings May 17th and May 31st.

Newsletter: Deadline to put anything in the Newsletter was May 12, 2025.

Education: George Ruff said there was an opportunity to collect Meteorites in Junction City, Ga from the 2022 Meteorite, and Club Members showed an interest in going.

Sunshine: Andrew Wamock said let him know of anyone needing a Card sent out.

Old Business: Bill asked for suggestions and comments on the picnic and said there would be another Auction in the fall.

New Business: Bill mentioned the Club has an obligation every two years to host a DMC Dig in March 2026 and asked members to be thinking of a location. He also asked for 3



volunteers to be on the Nominating Committee for the Clubs Officers Election in October 2025. Tina, Shawn, and Tate volunteered.

MOM: George said the Mineral of the month is Borax and is composed of Boron, Oxygen and water found around Hot Springs in Death Valley also India, China, and Turkey. Used for flux, glaze, medicine and in 20 Mule team Borax soap. Tina uses Borax to make Silly Putty at STEM events.

ROM: George talked about the Rock of the Month Concretions saying they were a Nodular Rock mass found in Shale and Clay Sediment formed from precipitation of Minerals. Septarian Nodules are formed from soft mud to Rock by pressure. Concretions have been found on Mars by one of the rovers. Moqui Balls from sandstone are found in Utah and Kansas. Makers Challenge: This month was Jewelry bails. Members had specimens and entries on display; a raffle followed with prizes. Meeting Adjourned at 8:49 P.M.

Respectively submitted by Al Steffanini

Pictures from the Pre-Meeting River Walk with Bill Witherspoon



Group at the River Walk examining a boulder.

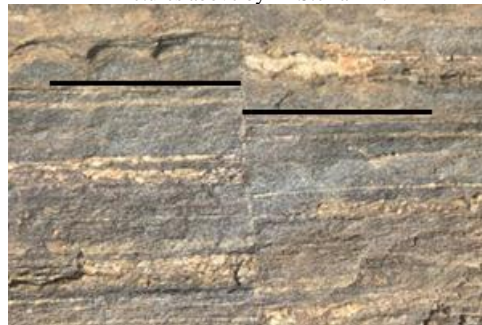


At the overlook for the Ocmulgee River



Looking at rock formations- Fall Line rapids are almost non-existent in Macon, but can be seen in Columbus and Milledgeville.

Pictures above by Al Steffanini.



Evidence of a fault at the Ocmulgee River Walk. Two black lines show how much shift was done.

Picture of fault by Susan Hargrove.

Pictures from the meeting!!!



Getting ready for the meeting- we had 25 in attendance.



Table set up for Borax, concretions, and pendant making.
Jay also had examples for the next maker's challenge.
Pictures by Al Steffanini



Everyone has their heads down looking for that next wonderful find.



Rock hounding can be single person or a family affair.

Pictures from the Irwinton Dig



Beautiful day and beautiful scenery.



Group picture with everyone who attended.



Time to walk and look.

Pictures from the Picnic and Auction



Jr. member helping to set the table



Group Picture before we got to eating all the food.



Discussing the food on the table and the wonderful watermelon.



Lots to eat with BBQ, Chicken, Baked Beans, Fruit, Desserts, Coleslaw, Potato Salad and more!!!



Making bubbles that are huge. We also had bocce ball and corn hole set up for the adventurous members.



Time to start the bidding on full stomachs of course.
 Pictures by Al Steffanini

Junior Rock Hounds

Our next meeting will be on May 17th from 10:00 to 12 noon. We will be working on wire wrapping a gemstone with a hole through the center. I will have gemstones and wire for all to use. We will meet on May 31st at 10:00AM to 1:00PM for another wire wrapping session where you will wrap a stone that does not have a hole in it to help. We will also be having lunch that day. Jay and Shawn, I may need your help the 31st. Bring goggles on the 31st. I also expect to see each of you with a pendant for the Maker's challenge if you have the time. In June, we will have something special for the meeting time so try to come.

Thinking ahead:

*Last year several people voiced concerns about our small tree during the Festival of Trees and I want to see what the club wants to do this year. We would need about 300 items more than we have now to do a 5 ft. tree. Jay and I have decorated rock trees and now a fossil tree with items donated from just a handful of club members and the juniors. Let me also say that there may not be a festival this year because of a change of leadership at the museum. I just want direction and lots more help. We need to discuss this at the next meeting.

*If you are interested in working the fair this year, there will be a sign up at the June Meeting since last year we had to do it via on-line link. Your willingness to work will be confirmed in late July/ early August. If you are not going to be present at the meeting send me your requested days/ times to put on the calendar.

*Don't forget to enter something in the fair this year. Talk to Jay if you need information or browse the fair's website.

* June 21 will be our first grab bag stuffing party at Jay's house at 10:00 AM until.
 Thanks. Tina



July 25 – 27, 2025



Let's Go Digging

An Official Field Trip of the Gaston Gem and Mineral Club (Gastonia, NC) (HOST)
An Official Field Trip of the Mid- Ga. Gem and Mineral Society

(This was sent out earlier in an e-mail on May 1st from the Editor. Please see that for more information.)

Saturday, June 7, 2025

9:00 a.m. Eastern Time

Private Dig Site

Conover, NC

Limit: 60 People

Registration Required ([click here](#))

Fee: Ages 16 and up: \$30

Ages 15 and under: Free

Minerals found on the site include small books of muscovite mica, smoky quartz crystals, feldspar, tourmaline, with some occurrences of green beryl, amethyst, and ilmenite found on the site.

Shows

Greensboro Gem & Mineral Club

Saturday, June 7

Piedmont Triad Farmers Market, Sandy Springs Rd., Colfax NC

Open Air Rain or Shine 12th Annual Gem, Mineral & Jewelry Show. Gem Sluicing, free geodes for kids 12 and under. Free admission, free parking

Link(s):

www.facebook.com/GGMCrocks

Franklin Chamber of Commerce/Gem & Mineral Society of Franklin NC

[Robert C. Carpenter Community Building,
1288 Georgia Road, Franklin, NC](#)

Fri. 10-6, Sat. 10-6, Sun. 10-4; Adults \$3; 12 & Under FREE; Door prizes, demonstrations, silver & gold jewelry, cut and rough stones, minerals, custom jewelry; contact Linda Harabuck, (828) 524-3161; Email: lindah@franklin-chamber.com; Link(s): Website: www.visitfranklinnc.com

Schedule for 2025

Date	Mineral	Rock	Fossil
9/2	Rutile		Dinos
10/6	Sand	Obsidian	
11/3	Rhodochrosite		Crinoids

How to Find Mineral and Fossil Locations

This is the second in a series of articles on resources that can be used to look for mineral and fossil hunting locations.

In this article, I will discuss the use of topographic maps and maps from publications to locate existing and former mining locations. Topographic maps, especially historical 7.5' U.S. Geological Survey (USGS) maps provide information on locations of former mining sites or quarry sites. These maps have undergone several revisions over the years, so some of the original maps will have mining location sites indicated on them with a specific symbol like a pick and shovel, or it may be labeled mine, shaft, strip mine, etc. Those same maps may be later revised to update them to the current status with those revisions showing mined areas as colorized (usually purple) areas superimposed over the original map color. The newer topographic maps, unfortunately, have been completely redrawn and lack the symbols or the revised coloration that would indicate a



mining location. PDF versions of these maps can be downloaded for free from the USGS Map Store at <https://store.usgs.gov/maps>. Once at this website, type in the city with state abbreviation that you desire in the search bar at the top of the page and hit the enter button. If maps by that name are available, a list of those maps and their dates and scales will show below. If an index for the state is available, you may need to look at it to find the name of the map for the city you are looking for. You will want to pick the 7.5-minute (1:24,000) maps or the 1:25,000 maps and select the one with the oldest issue date. Then select view/download free and the map will download to your computer. Then go to your download files site of your computer and click on that file to see the map. For starters, you may try the 1956 version of the Macon East 1:24,000 map and in the bottom left quarter of the map you will see many strip mines identified that were associated with clay mining for the Burns Brick and Cherokee Brick manufacturing companies. Segments of two different maps are attached that show sites that you may recognize from previous Mid- Georgia Gem and Mineral Society Field Trips. Figure 1 is of the 1964 Hillsboro, Georgia 1:24,000 topographic map that shows quarries that were associated with the former Feldspar Corporations mines about 6 miles SW of Monticello.



Figure 1: Hillsboro, Ga.

Figure 2 is of the 1973/81 Church Hill, Georgia 1:24,000 topographic map that show strip mines where iron ore (limonite and goethite) were mined.

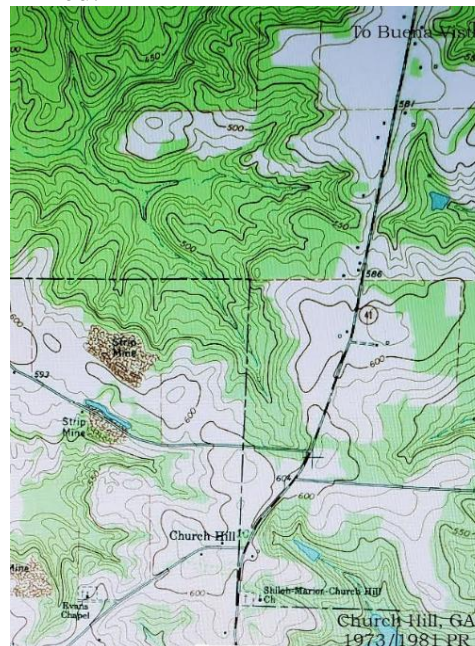


Figure 2: Church Hill, Ga.

Other maps can be found in historical publications, as well as more current publications. Figure 3 is from the Georgia Geologic Survey (GGS) publication, Bulletin 96 – Geology of the Greater Atlanta Region, specifically Plate IIa, Mines, Prospects and Mineral Localities of the Cartersville Area (B=Barite, Oc=Ocher, T=Tripoli, SG=, Mn=Manganese, L=Limonite). Two other plates in that publication provide locations of mines, prospects, and other locations of minerals in the Atlanta region, which covers the U.S. Geological Survey 1:100,000 topographic map. A table in the text provides information on each numbered location and the commodity found there.

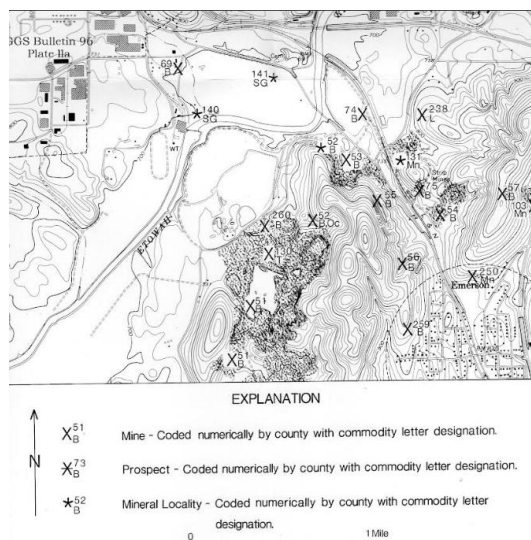


Figure 3: B96 Ila

GGS Bulletin 62, Paleontology of Northwest Georgia, also has maps that show locations for fossil hunting. Fig. 4 and Fig. 5 (Index Maps 5 and 6, respectively) show locations of Mississippian and Pennsylvanian Paleozoic fossils, respectively.

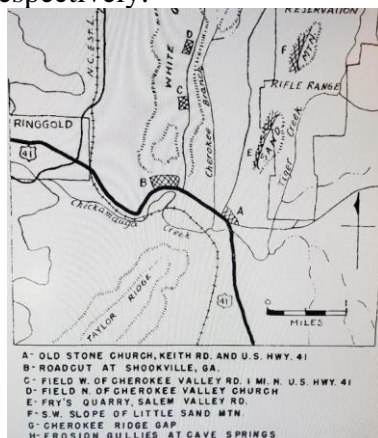


Figure 4: Index Map 5 of Bulletin 62

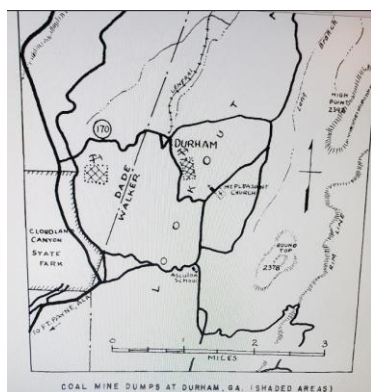


Figure 5: Index Map 6 of Bulletin 62

BUT, keep in mind that most locations are on private property and one must have permission to mineral or fossil hunt from those landowners. For Federal lands, restrictions do apply, so check with the local Federal entity to find out what restrictions may apply to your adventure. Within Georgia, collecting is NOT allowed on most state-owned lands, although safely accessible rights-of-way are not specifically prohibited. Other states may have different restrictions.

Which of these Rock and Mineral Collecting-related Practices Do You Relate To?

Gemologist – a person who studies gems, including the mining, preparation of cut stones, appraisal, making into jewelry, and marketing of finished products

Geologist – a scientist who studies the composition, structure, and history of Earth

Lapidarist - a craftsperson who cuts, facets, engraves, and polishes gemstones, and the shop of such an individual.

Mineralogist – a scientist who studies minerals, their crystallography, properties, classifications, and ways of distinguishing them

Paleontologist – a scientist who studies the life of the geologic past including animal and plant life, both macro and micro in size

Petrologist – a scientist who studies the origin, history, occurrence, structure, chemical composition and classification of rocks

Rockhound – a person who collects rocks and minerals, including semi-precious stones, primarily as a hobby, for their personal enjoyment

Sedimentologist – a scientist who studies the constituents, textures, structures, and fossil content of the deposits laid down in environments



Stratigrapher – a scientist who studies the layers of rock and earth that make up the Earth's crust

Volcanologist – a scientist who studies volcanos and volcanic phenomenon

By Edwin Williams

Mid-Georgia Gem Clips

Official Bulletin of Mid-Georgia Gem and Mineral Society Macon, Georgia

The Club meets on the First Monday of each Month, at The Museum of Arts and Sciences, in Macon, Georgia at 7:00 PM.

Except: No meeting January, July, and August. The annual Christmas Party is the first Monday in December. September the first Tuesday of the Month

Purpose: To promote the earth sciences, the lapidary arts, and the collection, study and display of rocks, minerals, and fossils; to promote the public awareness of these efforts in educational and recreational activities.

Club Officers:

President: Bill Mayer, 678-621-3457
[orebilly at gmail.com](mailto:orebilly@gmail.com)

Vice Pres./ Programs/ Field Trips: Jay Batcha, 4220 Cyndy Jo Circle, Macon, Ga. 31216, ph. 478-957-5002 [rocky1s at yahoo.com](mailto:rocky1s@yahoo.com)

Secretary: Al Steffanini, ph. 478-396-4279,
[aldosteffanini at gmail.com](mailto:aldosteffanini@gmail.com)

Treasurer: Susan Hargrove, 86 Clear Branch Rd, Butler Ga. 31006, ph. 478-837-5327, [susanbphilh at pstel.net](mailto:susanbphilh@pstel.net)

Editor/ Jrs: Tina Perkins, ph. 478-542-0388, [fossilhunterofgeorgia at gmail.com](mailto:fossilhunterofgeorgia@gmail.com)

Education Chair/ Field Trip Helper: George Ruff, 706-975-9209 [gsruffsr at gmail.com](mailto:gsruffsr@gmail.com)

Sunshine Chair: Andrew Warnock, 478-230-0803
[aswarnock at gmail.com](mailto:aswarnock@gmail.com)

Field Trip Helper: Tim Brotzge. [tim.brotzge at gmail.com](mailto:tim.brotzge@gmail.com) 770-772-8644

Web Master/ Facebook: Pam Mayer, [pam5mayer at gmail.com](mailto:pam5mayer@gmail.com)

Mid Ga. Gem and Mineral Society Application for Membership

Name(s) _____

Address _____

City _____

State _____ Zip _____

Phone _____

Adult (18-64) \$15.00 Junior \$ 5.00

Family (2 adults and 2 children under 18) \$25.00
Additional children \$5.00

Seniors (65+) \$10.00 Newsletter mailed \$5.00

New _____ Renewal _____

E-mail _____

Address _____

How did you hear about us?

Circle your interest(s):

Gems and Minerals Lapidary Fossils

Education Rocks

Make checks payable to:

Mid-Georgia Gem & Mineral Society

Mail to the Treasurer (listed on this page) or bring to a meeting.



Mid-Georgia Gem Clips

**Official Bulletin of Mid-Georgia Gem
and Mineral Society
Macon, Georgia**

**Member of Southeast Federation of
Mineralogical and Lapidary Societies
Member of American Federation of
Mineralogical Societies**



Mid-Georgia Gem Clips

Tina Perkins, editor
106 Brown Dr.
Warner Robins, Ga. 31093