



**Monday, February 3, 2025 at 7:00 PM.**

### **Museum of Arts and Sciences**

Come early to chat with the early birds. Don't forget to bring your mineral (Jadeite) and fossil (Coral) of the month. The speaker for this month is Andrew Warnock who will be talking about his week at William Holland. March will be Jay Batcha talking about his Canada trip and April is James Gazaway.

### **Table of Contents**

President's Message	page 01
Meeting Minutes	page 01
Christmas Party Pictures	page 02
Special Information	page 02
Let's Go Diggin' / Shows	page 03-04
Schedule	page 05
Mineral of the Month	page 05
Fossil of the Month	page 06
Heritage/ Rock Club/ Jrs.	page 07
Maker's Challenge	page 07
Garden Club	page 07
Blast from the Past	page 07
Editor's Note	page 08
Club Information	page 09

### **Upcoming Events**

Greensboro Dig Feb. 15  
Heritage Elementary STEAM Feb. 25

### ***Prez Box 2025***

It is good to be alive in 2025! At my age, every year is a blessing to enjoy. Regardless of your age, everybody should be enjoying their life as much as possible. Rocks and gems are one of the things in life that is enjoyable and bring us all together. Congratulations to Pam Mayer for winning this year's William Holland

Scholarship. I know she is excited and ready to take her class. Is there anything you are eager to have a club activity or would want to share with the club this coming year? Field trips, classes and programs are usually at the top of the list. Jay has a few field trips planned for the coming year that are looking good. Field Trips are one of big reasons for us joining the club. As this year's President, my goal is to facilitate the clubs wants and needs. All this is based upon your fellow members and peoples willing to volunteer. Currently we have many programs and events that are happening that could use extra volunteers to help lighten the load. Our school outreach programs and growing junior section are the 2 best examples of areas to jump in and start participating. To start the year, we have a few items to address that require our attention:

1. The mailing costs for the newsletter. Currently, we are losing money to mail the letters. Although the amount is small and just a few receive them. We need to address this issue. Tina will have an article on this in this month's newsletter.
2. Our Junior Program is running strong thanks to its leader, Tina. We need to formalize this section by adding this to our Constitution. There will be an article on this too. We can then discuss and bring to a vote.
3. Maker's challenge; This is a great idea brought to us by Shawn. How often to you want to have one? Once a month, every 2 months? Something else? If so, then we need ideas for the projects. That is where you come in, please present your ideas to the membership for discussion.

This will take a little time to get through, but the time spent here will make it easier later. See ya at the meeting!

Prez Bill

### ***December Meeting Minutes***

Club President Bill Mayer called the December 2, 2024 Christmas Party Meeting to order at 7:48 P.M. with 37 in attendance. He welcomed



new members Jason Boan and Ashley Sinyard. He also talked about Tuell Walters recent Auction saying the Club collected 1166.00 Dollars for Tuell. Bill thanked Tina Perkins for the table decorations and for setting up the Clubs Fossil Christmas Tree in the Museums Festival of Trees Display. She said the Jr Rockhounds made and painted the Fossil ornaments at the Junior's recent meeting. Bill thanked Andrew Warnock for bringing 2 Get Well Cards ,1 Wedding Congratulation Card and 2 Christmas Cards for Members to sign. He also talked about the Club Annual Gift Exchange and the Clubs William Holland/ Wild Acres Lapidary School Scholarship. Bill asked Jay Batcha to talk about the upcoming Club dig in Buena Vista, Georgia. Afterwards the Gifts were exchanged and Pam Mayer was the winner of the Scholarship with Launa Williams as Alternate.  
Respectively submitted by Al Steffanini

### *Christmas Party Pictures*



Lots of Fun Gifts to be had by those in attendance.



Admiring the Festival of trees and our small tree with ornaments from the Juniors.



Lots of fellowship and food.



Getting things set up.

### *Special Information About Changes*

Stamp prices as well as ink and paper have gone up dramatically in the last three years. Stamps are set to go up again sometimes in the first or second quarter of 2025. At present with just stamps, the club spends more than \$5.11 per person. To defray some of the cost we would need to adjustment under Article 9:

To have the newsletter mailed to a member, there will be a charge of \$8.00.

The next items are changes made to incorporate the Junior Section into the constitution. Section 9 below is added in its entirety.

#### **Article 10. Membership**

Section 1. There shall be the following classes of membership:

Members, Junior members (ages 5



and above), and Honorary Members. Members are adults of 18 years old or over in good standing. Junior members are those in good standing under the age of 18 years of age. A Junior member is automatically elevated to Member upon the attainment of his 18th birthday and shall pay the dues of a member accordingly.

#### **Article 4. Duties of Standing Committees and Positions.**

##### **Section 9. Junior Rockhounds**

The President shall appoint, upon election to the office, a Junior Rockhound Person who will be responsible for making a budget by the February meeting to submit to the executive council and working with Juniors ages 5-18 years old. Activities for Junior Rockhounds should include instruction in identification of minerals, gems, rocks, and fossils, instruction in the lapidary arts by members of the society, activities associated with earning a badge as set forth by the SFMS, activities such as field trips that are safe for their participation, and activities that are beneficial to the Society, as well as activities not listed that help with the educational development of the Junior Rockhounds.

**Below is the outline of the budget for 2025 which will be brought to the attention of the executive committee.**

Budget: (Lapidary Badge)  
Food, snacks, and drinks...\$300.00  
Wire for wrapping... 50.00  
Rocks for wrapping... donation  
Lapidary books that Jrs. can look through... donation  
Someone to teach a class on wrapping rocks. Do we have any takers?

---



### **Let's Go Digging**

An Official Field Trip of the Greensboro Gem and Mineral Club (Greensboro, NC) (HOST)  
An Official Field Trip of the Mid Georgia Gem and Mineral Society

Saturday, February 15, 2025

Meet at 8:30 AM Eastern

Collect from 9:00 AM to 5:00 PM Eastern

Emerald Hollow Mine

Hiddenite, NC 28636

No Attendance Limit

Registration Required (Link is below)

Fee: \$20 per adult; under 14 free

**COLLECTING:** There are over sixty minerals that can be collected at this location including emerald, aquamarine, sapphire, garnet, topaz, amethyst, citrine, rutile, and tourmaline. There is an abundance of world class smoky and clear quartz crystals. The rare mineral hiddenite can be found only in the Hiddenite area.

**BRING:** Tools required depend on which type of digging you are interested in doing. You can choose to dig in the pit area, the mine will provide a shovel, or you can use the sluice trough and choose buckets of dirt to sift. The mine provides full-size shovels and 5-gallon buckets for the dig site. If you are going to use the sluiceway to wash your material, a wagon is recommended to assist in transporting the material back and forth. For the creek they provide screens and plastic scoops. You are welcome to bring any other hand tools that you prefer to use, but no metal tools are allowed in the creek. Water is available for purchase, but you need to bring your own lunch/snacks. See the mine website for more information about what to





bring: <https://www.emeraldhollowmine.com/what-to-bring>

**TERRAIN:** The mine is easy access with no limitations.

**FEE:** \$20 per adult; under 14 free

**REGISTRATION:** Click [here](#) to fill out a registration form. If you register and are unable to attend the trip, please let us know so we can update the registration list for an accurate head count.

**CHILDREN (Yes):** All ages are welcome. Adult oversight is required.

**PETS (No):** No pets.

**FACILITIES:** There are full toilet facilities on-site and food sites are located within a 15-minute drive.

#### ADDITIONAL

**INFORMATION:** There is an open sales shop and museum showcasing minerals collected over the years from this mine. There will be a roaming onsite geologist to answer questions and assist. There is also a 15% discount on enriched 5-gallon buckets. They vary in price from \$20 to \$150.

#### DIRECTIONS AND WHERE TO

**MEET:** Registered participants will be sent a confirmation email with directions and meeting place details.

**CARPOOLING:** The registration form has a place for you to indicate if you *need* a ride; if you can *offer* a ride; or if you would like to *drive or share* a carpool ride. If you choose any of these options, your name, email address, and club name will be shared with other members who also choose one of the

options. Then, you can communicate with one another to arrange carpools.

**CONTACT:** Gary Parker, [redrutile at bellsouth.net](mailto:redrutile@bellsouth.net), 336-402-5252

## Shows

Please be aware that respiratory illnesses are spiking this time of year and events may be cancelled. Always check before you head out.

Central Brevard Rock & Gem Club  
February 1 – 2, 2025

[Kiwanis Recreation Center 951 Kiwanis Island Park, Merritt Island, FL 32952](#)

Show starts Saturday 02/01/2025 from 9:00am - 5:00pm, Sunday 02/02/2025 10am-4:00pm. Admission is \$6 for adults, children are free under 12 accompanied by an adult. \$1 off coupon can be found on website [www.centralbrevardgems.com](http://www.centralbrevardgems.com). There will be vendors selling rocks, slabs, minerals, specimens, crystals and jewelry handcrafted and handmade. Activities for children include a sluice and spinning wheel with prizes. Hourly door prize drawings as well as grand prize raffles available. Club tables with silent auction.

---

Mississippi Gem and Mineral Society  
February 22 – 23, 2025

[1200 Mississippi St. Jackson, MS 39202](#)

66th Mississippi Gem, Mineral, Fossil, and Jewelry Show Sponsored by The Mississippi Gem and Mineral Society Saturday, February 22, 2025 Sunday, February 23, 2025 Time: Saturday 9am – 6 pm Sunday 9am – 4pm Location: Mississippi Trade Mart on the State Fairgrounds Jackson, Mississippi Admission: Adults \$8 Students \$3 Scouts & Leaders in



Uniform \$2 Children 5 & under—Free MGMS website: [www.missgems.org](http://www.missgems.org) Information email: [mgmsshow@missgems.org](mailto:mgmsshow@missgems.org)

★ Over 25 dealers of gems, fossils, minerals, jewelry, lapidary tools, beads, and more  
★ Demonstrations of lapidary art including flint knapping, cabochon cutting, and jewelry making  
★ Exhibits and educational opportunities by colleges and state organizations  
★ Children's activities (adults are welcomed too)  
★ Touch and See Table  
★ Displays by MGMS members of their own collections or lapidary work  
Link(s):  
<https://www.facebook.com/share/g/1ZhivFnPM SAR36uY/>

### Schedule for 2024-2025

Date	Mineral	Rock	Fossil
3/3	Malachite	Mudstone	
4/7	Garnierite		Fern leaf
5/5	Borax	Concretion (septarian or non-septarian)	
6/2	Bring	your favorite	specimen

## Mineral of the Month Jadeite

Jadeite is a silicate mineral with the composition  $\text{Na}(\text{Al}, \text{Fe}^{+3})\text{Si}_2)_6$ . It has a hardness of 6-7 and a specific gravity of 3.24. It is rare for Jadeite to form crystals. When it does the crystals are small, prismatic, and elongated. They are usually striated and twinned. It mostly occurs in massive and granular habits. The color is typically green, but can be white, gray, blue, mauve, and when stained by iron oxides, brown and yellow. The streak is colorless. It is monoclinic. Imperial jade also known as fei cui jade represents the best jade. It is the most prized and valuable jade. Apple green jade is like the skin of a

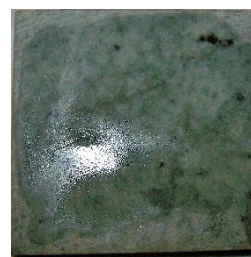
granny smith apple and looks more delicate. This jade comes from Myanmar.

Moss-in-snow jade has unusual combinations of bright green on a background of translucent white. It is also found in Myanmar. Lavendar Jade has a delicate purple color from light soft lavender to deep violet. It can also be pinkish to bluish. It is found in Turkey. Icy Jade is known for its exceptional transparency and clarity. It is also found in Myanmar. Olmec blue jade comes from the Olmec civilization in Mesoamerica. It is not just a single color. Jadeite in North America is mainly found along fault lines and is dominant in the state of California.



Lavendar and Green Jade Nodule  
Near San Simeon, California  
Picture by Editor

Jade found in Washington is Nephritic. Jade forms in serpentine ultrabasic rocks and in some schists. It has also been found in small veins and lens-shaped inclusions in chert and graywacke. Jade has been used for making tools, weapons, and ornamental objects including jewelry, talismans, and carvings since before 3400 BC especially in China.



Jade Slab  
California  
Picture by editor



## Fossil of the Month

### Coral

Dorothy Hill (1907-1997) was one of the first paleontologist to contribute to the prehistoric world by analyzing corals from the Paleozoic. Corals and their reefs are important in dating remains as index or indicator fossils. Her three volume International Treatise on Invertebrates is still admired worldwide. She was the first woman to be made a professor at an Australian University.

#### Zaphrentoides (Rugosa "Horn" Coral)

Given the name because their skeletons look like the horns of cows. One polyp resided in the outer cup surrounded by a ring of tentacles that could sting.

Lithostrotion (rugosa coral genus)- Commonly found as a fossil in Carboniferous limestone.

Extinct by the end of the Paleozoic.

There were 21 species in this genus.

Favosites- Usually called tabulate coral or honeycomb coral. It thrived as a colonial coral from Late Ordovician to Late Permian. It is found on every continent except Antarctica.

There were 32 different species.



Public Domain- Wikipedia  
Upper Ordovician  
Southern Indiana, USA

Heliolites - Found in fossil beds in North America, Europe, Africa, and Asia, this tabulate coral was extinct by the end of the Devonian.

*Syringospira* - Found in the Columbus Limestone in Ohio, it was most widespread during the Silurian, Devonian, and the carboniferous periods. It can also be found in Arkansas and Kansas.



Public Domain- Wikipedia  
Arkansas

The coral that most of us are familiar with comes from Georgia and Florida. This coral was replaced by silica and has become agatized. Although the actual species of coral is unknown, all can agree it is an Anthozoa possible a soft coral or a stone coral. It is however, UV sensitive.



Anthozoan (Cnidarian)  
Withlacoochee River, Georgia  
Also called Agatized Coral  
Picture by Editor

Other corals of interest are colonial tube corals, cup corals, and brain corals. Many corals in the fossil record have living relatives today that occasionally wash up on the beach.

### Heritage Elementary

STEAM night for Heritage Elementary is February 25, 2025 from 5:30 until 7:30. George, Jay, Anita, Katelyn, and James have





already volunteered. Tina orchestrates this for the whole school teaching students and teachers what to do the week before. That night she is either teaching or running around helping everyone.

### Rock Club

One of the schools I present to each year asked over the summer if I would like to do a Rock Club. I said sure, but no more than 20 students and preferable grades 3-5. In September, I wound up with 12 students, grades 2-5; ten boys and two girls. In November and December with bases from Jay, I helped them make trees to take home with them for Christmas. I donated the gems, wire, glue, and a mushroom. Below are some of their hands holding their small trees. They loved it. Tina



### Junior Rock Hounds

The Juniors will meet on March 1<sup>st</sup> at my house from 10:00AM to 11:30AM starting on some more badge work and March 8<sup>th</sup> we will be going on a field trip with more information to follow. Come with your thinking caps on. Hope to see you soon.

### Makers Challenge:

**Don't forget to bring your soap carving in February.**

You can make anything from a square with a circle in the middle as one of the juniors did or you can go really elaborate like Jay did with a

turtle. Make it a fun hour and even practice a couple of times. Just bring something in.

### Butler Garden Club

On January 8, 2025, Tina and Sylvia presented at the Butler Garden Club. Tina did the main presentation and Sylvia brought samples of gems and minerals she had around her house. Thanks to Jay and Katelyn for helping layout the table full of stuff that Tina talked about.



Picture by one of the ladies at the meeting using editor's camera.

### Blast from the Past

This was originally published in the Newsletter when Jay Batcha was editor in February of 2012.

**Qualifications for Being a Rockhound (via Hatrockhound Gazette, 8/01, Clackamette Gem, 6/01)**

1. Love of the outdoors- where else can you find rock.
2. Strong Back or Good Judgment rocks gain weight with every step.
3. Sense of Humor- being able to appreciate someone else's find after you just stepped over it.
4. Cheerful- smile even if every muscle and bone in your body aches.
5. Adventurous- daring to take a road, even if it looks like it goes straight up.
6. Persistent- not satisfied until you have turned over every rock twice.
7. Determination- visualizing a beautiful gem cut out of a plain rock.



## Tidbits- selecting good material

From: Willamette Agate and Mineral Society website  
submitted by Mike Gaines

At a recent meeting I was asked, "How do I know I'm buying good quality material?" This is a hard question to answer, but here are a few tips that may help:

1. Look for certain characteristics in any piece you buy:

- Hardness- the harder the material, the better polish you'll achieve.
- Flaws or Fractures- will the piece stay together or will it break in the saw? Can you easily work around the flaw? If it's really rare, you might want to take a chance. Many plumes are pitted on the surface, but you can learn to fill those flaws with epoxy. If you're buying a chunk, does it look like the part you wish to cab goes deep enough or is it only on the surface?
- Thickness- A lot of great slabs are unworkable because they were cut too thin. Slabs cut too thick are extremely hard to recut and may end up too thick for many jewelry mounts. 1/4 inch or thereabouts, is a good cabling slice.
- Color- is it natural or dyed? Ask the dealer, they usually can tell you.
- Pattern- Is the pattern too perfect? It might be reconstituted (they take scraps of the original rock and under high pressure glue them together, adding artificial patterning). While reconstituting is not bad, you should know that you are buying something that is not in its "natural" state.
- Special Features- Plumes-- are the plumes so dense that they're hard to see? Plumes in clear agate make the best stones.
- Banding- are the bands wide enough to show the pattern clearly? Rutile- Like plumes, rutile shows best in clear agate, too much rutile won't show as well. Crystal pocket- many people consider this a flaw— depending upon how you orient the pocket, it can make a spectacular piece. Carry a small template so that you can "window" a

piece before you buy.

- Matrix- Sometimes you find a great piece, but there's a lot of unusable matrix attached to it. Ask the seller if they took into account the matrix in determining the price. Depending on how bad you want the piece, you might get them to reduce the price. It usually doesn't hurt to ask.
- 2. Buy a small amount of the best material, rather than a lot of the cheap material. I can't emphasize this enough. Getting a "bargain" isn't really a bargain if when you get home, you spend a lot of time and energy creating a piece that is only so-so, and you have a lot of waste to get rid of.
- 3. When you find nice material for a reasonable buy price, extra. Many times, I've kicked myself for not buying more and never saw the material for sale again. You can always use the extra for trading material or offer the excess to a rockhound friend for a reasonable price and recoup part of your investment.
- 4. Get acquainted with the Dealers. If they know what you like to work on, they can keep their eyes open for the material and steer some great material your way before it goes "out on the table". Learn to pick up business cards from dealers you like to do business with---make notes on the back of the card regarding what they offer.
- 5. Last, and probably most important---ask friends and fellow rockhounds for help. I wouldn't still be in this hobby if it wasn't for fellow club members who took me under their wing and willingly volunteered to help me. But remember, you're the one that ultimately works on the material that you select, so you are the one that must decide whether or not to pay the price asked.

**Editor's Note:** You may notice something different about the newsletter under the officers and committee chairs. It was requested to stop using @ in e-mails because scammers can get them off the newsletters.





Now you will see the “at” in the e-mail address. They can not copy it and send us requests for money pretending to be someone in the list.

**Mid-Georgia Gem Clips**  
**Official Bulletin of Mid-Georgia**  
**Gem and Mineral Society**  
**Macon, Georgia**

The Club meets on the First Monday of each Month, at The Museum of Arts and Sciences, in Macon, Georgia at 7:00 PM.

**Except:** No meeting January, July, and August. The annual Christmas Party is the first Monday in December. September the first Tuesday of the Month

**Purpose:** To promote the earth sciences, the lapidary arts, and the collection, study and display of rocks, minerals, and fossils; to promote the public awareness of these efforts in educational and recreational activities.

**Club Officers:**

**President:** Bill Mayer, 678-621-3457  
[orebilly@gmail.com](mailto:orebilly@gmail.com)

**Vice Pres./ Programs/ Field Trips:** Jay Batcha, 4220 Cyndy Jo Circle, Macon, Ga. 31216, ph. 478-957-5002 [rocky1s@yahoo.com](mailto:rocky1s@yahoo.com)

**Secretary:** Al Steffanini, ph. 478-396-4279,  
[aldosteffanini@gmail.com](mailto:aldosteffanini@gmail.com)

**Treasurer:** Susan Hargrove, 86 Clear Branch Rd, Butler Ga. 31006, ph. 478-837-5327,  
[susanbphilh@pstel.net](mailto:susanbphilh@pstel.net)

**Editor/ Jrs:** Tina Perkins, ph. 478-542-0388, [fossilhunterofgeorgia@gmail.com](mailto:fossilhunterofgeorgia@gmail.com)

**Education Chair/ Field Trip Helper:** George Ruff, 706-975-9209 [gsruffsr@gmail.com](mailto:gsruffsr@gmail.com)

**Sunshine Chair:** Andrew Warnock, 478-230-0803  
[aswarnock@gmail.com](mailto:aswarnock@gmail.com)

**Field Trip Helper:** Tim Brotzge. [tim.brotzge@gmail.com](mailto:tim.brotzge@gmail.com) 770-772-8644

**Web Master/ Facebook:** Pam Mayer, [pam5mayer@gmail.com](mailto:pam5mayer@gmail.com)

## Dues are Due!

Another year has gone by in no time. It's that time of the year to pay dues. You will be dropped after February's meeting if you have not paid.

### Mid Ga. Gem and Mineral Society Application for Membership

Name(s) \_\_\_\_\_

\_\_\_\_\_

Address \_\_\_\_\_

\_\_\_\_\_

City \_\_\_\_\_

State \_\_\_\_\_ Zip \_\_\_\_\_

Phone \_\_\_\_\_

Adult (18-64) \$15.00      Junior \$ 5.00  
Family (2 adults and 2 children under 18) \$25.00  
Additional children \$5.00

Seniors (65+) \$10.00      Newsletter mailed \$5.00  
New \_\_\_\_\_      Renewal \_\_\_\_\_

E-mail \_\_\_\_\_

Address \_\_\_\_\_

How did you hear about us? \_\_\_\_\_

Circle your interest(s):

Gems and Minerals      Lapidary      Fossils

Education      Rocks

Make checks payable to:  
Mid-Georgia Gem & Mineral Society  
Mail to the Treasurer (listed on this page) or  
bring to a meeting.



## **Mid-Georgia Gem Clips**

**Official Bulletin of Mid-Georgia Gem  
and Mineral Society**  
Macon, Georgia

**Member of Southeast Federation of  
Mineralogical and Lapidary Societies**  
**Member of American Federation of  
Mineralogical Societies**



## **Mid-Georgia Gem Clips**

Tina Perkins, editor  
106 Brown Dr.  
Warner Robins, Ga. 31093